

Accessories roofing shingles sealing flange

N648588

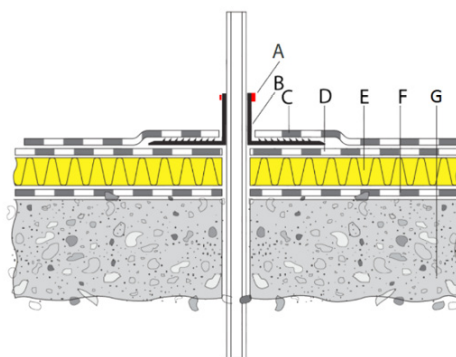


MATERIAL:

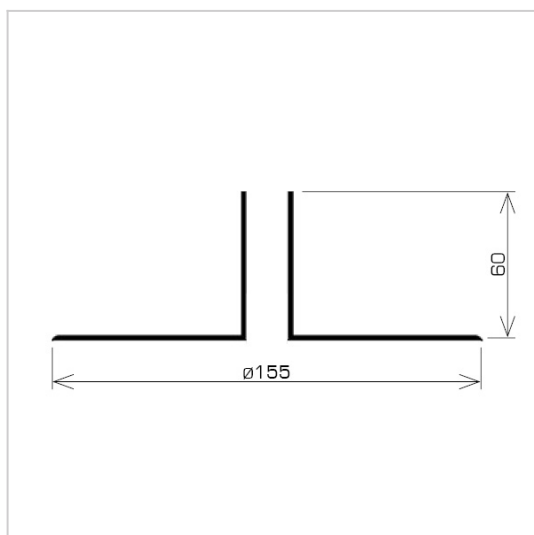
other

DESCRIPTION:

A product used to seal the place where lightning conductors pass through the roof. Made of the IGOM CE material. The collar is welded to the heat-weldable roofing felt, providing a tight connection and protection against water under the waterproofing. Supplied with a snail clamp.



- A** - conductor clamp
- B** - a sealing collar where a conductor passes through
- C** - waterproofing layer
- D** - a layer of heat-sealing felt
- E** - vapor barrier
- F** - a layer of heat-sealing felt
- G** - ceiling



symbol	N648588
type	Z64
for conductors(mm)	$\varnothing 8 - \varnothing 10$
material	other



AN-KOM 2 Sp. z o.o.
Inwałd, ul. ks. Władysława
Bukowińskiego 15
34-120 Andrychów



an-kom.pl
sales@an-kom.pl



tel./fax
+48 605 527 132