

HOLDERS Covered concrete with rotary bottom

B931508



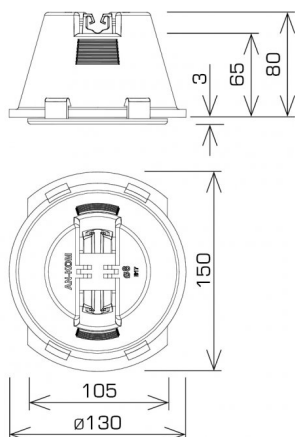
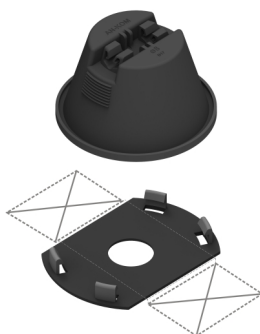
MATERIAL:

plastic/concrete

DESCRIPTION:

Concrete holder in plastic with a rotating base is used to build an air terminal grid on flat roofs. After attaching the stand and inserting the holder into it, it is possible to rotate the handle in any direction. Made of polypropylene – PP (frost resistant) with additives protecting against UV radiation. The holder is filled with a frost-resistant cement mortar.

PURPOSE: flat roofs covered with membrane, roofing felt and sheet metal



symbol	B931508
type	AN-11F
conductor(mm)	Ø8
weight(kg)	~ 1
material	plastic/concrete



AN-KOM 2 Sp. z o.o.
Inwałd, ul. ks. Władysława
Bukowińskiego 15
34-120 Andrychów



an-kom.pl
sales@an-kom.pl



tel./fax
+48 605 527 132